

How safe is my workplace

Managers Briefing 22 July 2020



What would you do if you owned this company

392
employees got
injured and
could not
come to work

2,200
employees
experienced a
minor injury

1,071 near
misses /
hazards were
identified

Only 57% of
workplace
inspections
were
completed

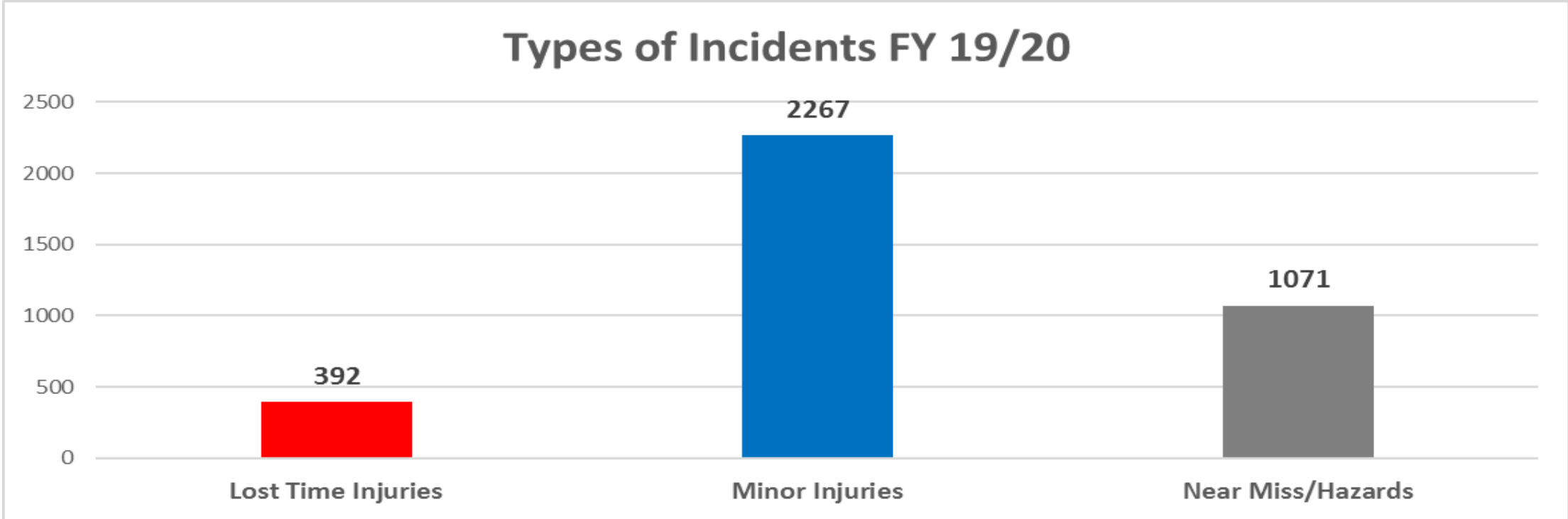


Agenda

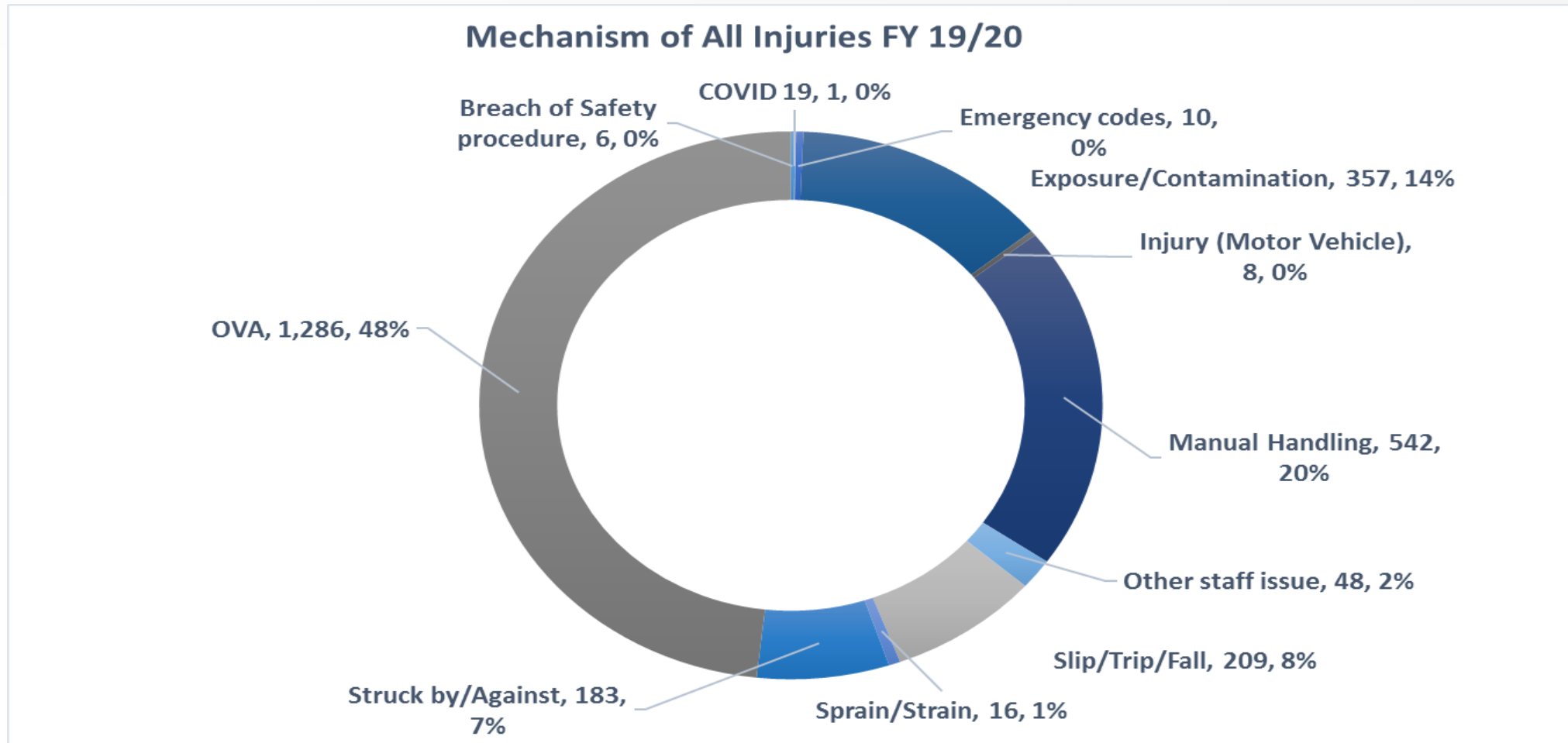
- What happened in 19/20 against key metrics
 - Incidents
 - Injuries
 - Workplace Inspection
- Where can I see my areas OHS performance
- What you need to do as a Manager
- What will be the areas of focus in 20/21



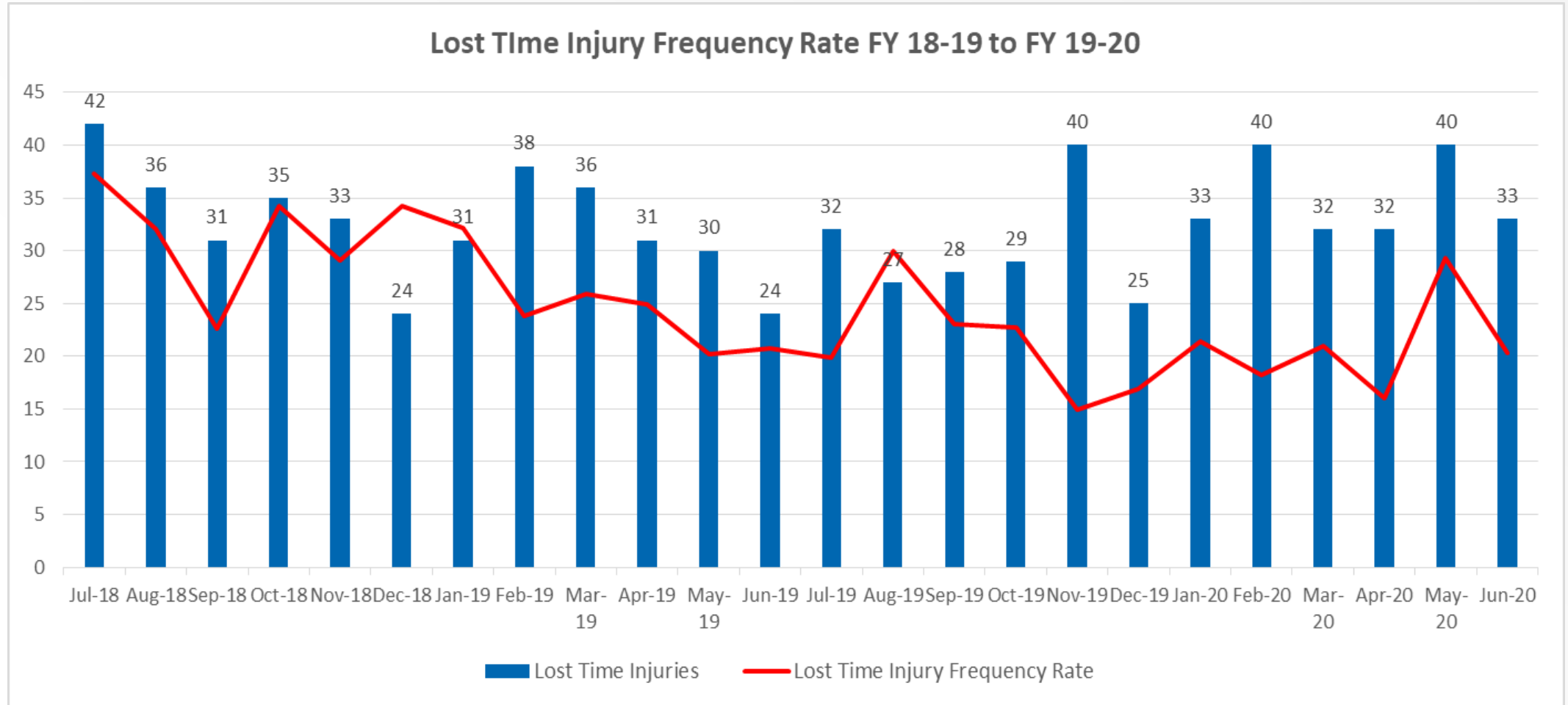
Types of Incidents- Riskman



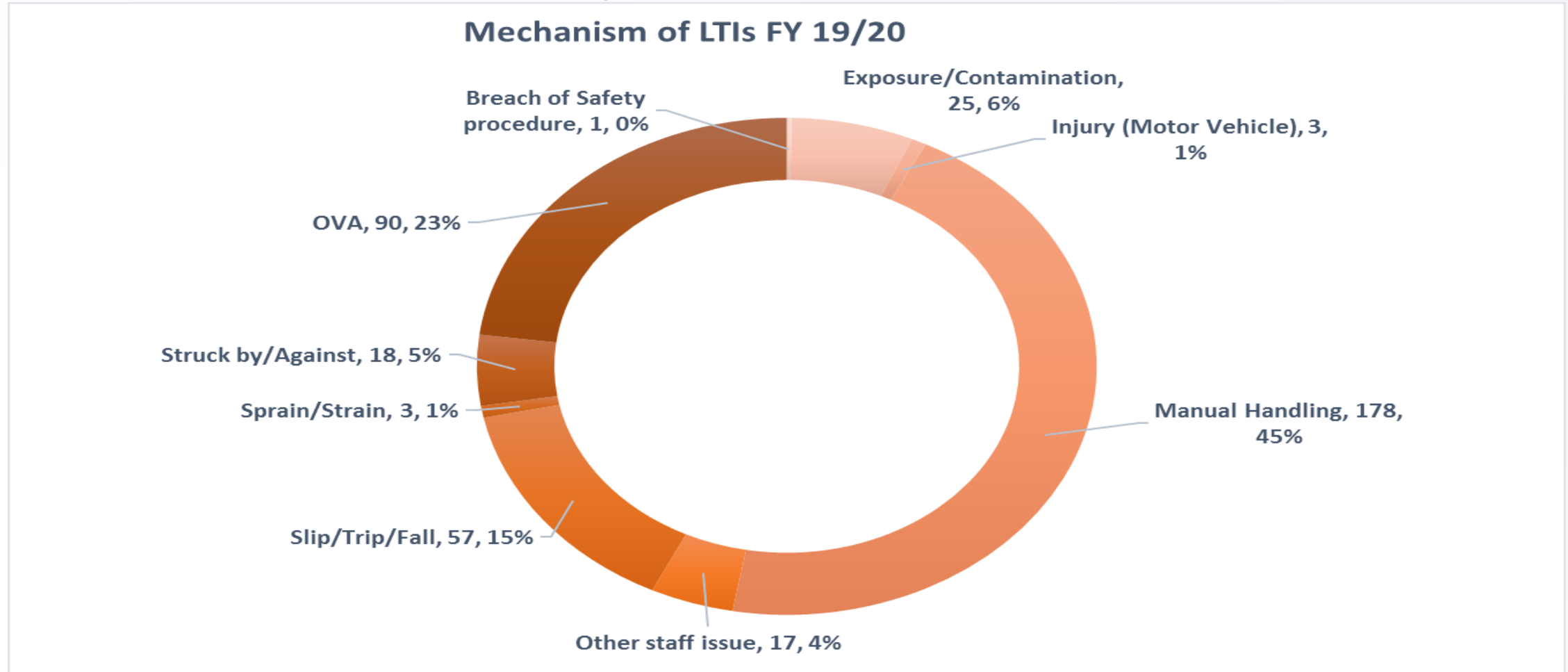
What causes our injuries



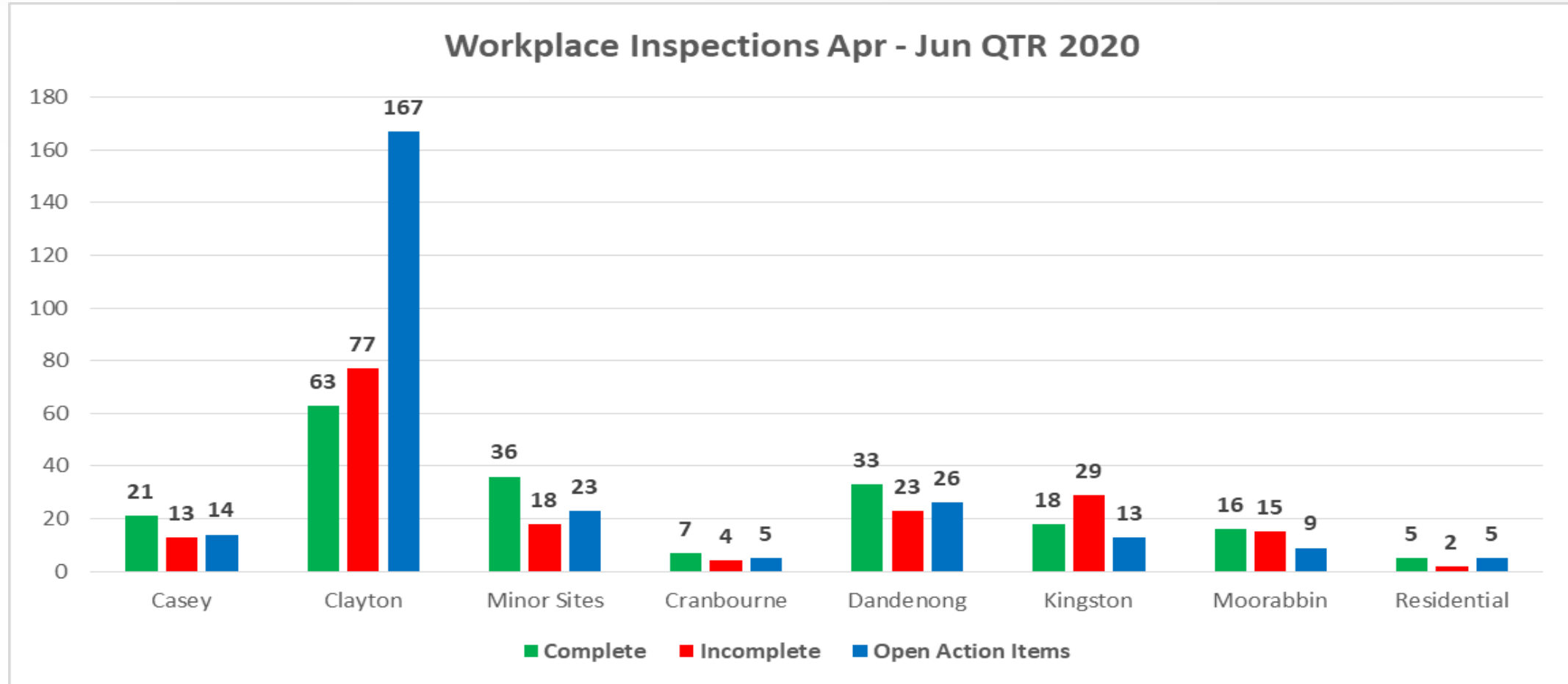
Lost time injury frequency rate



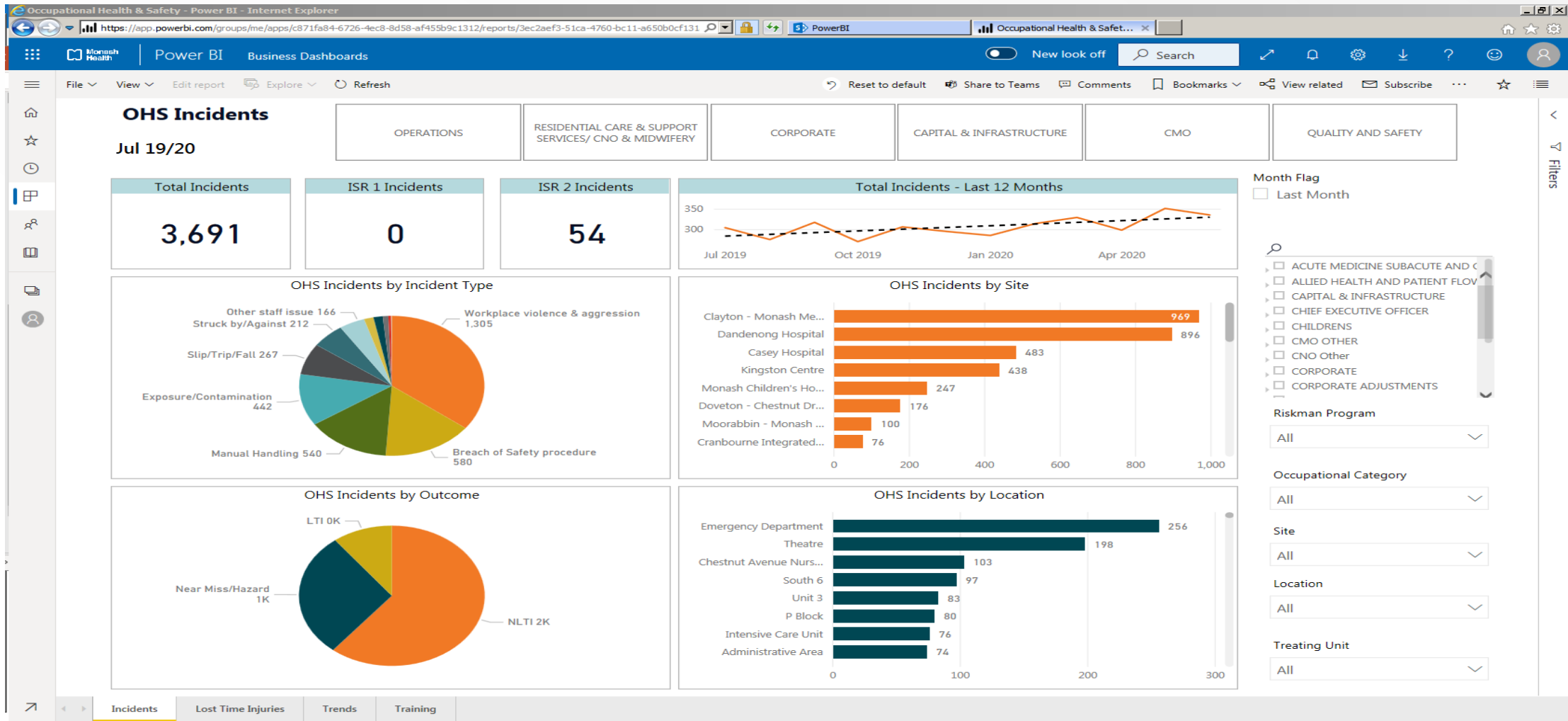
Cause of lost time injuries



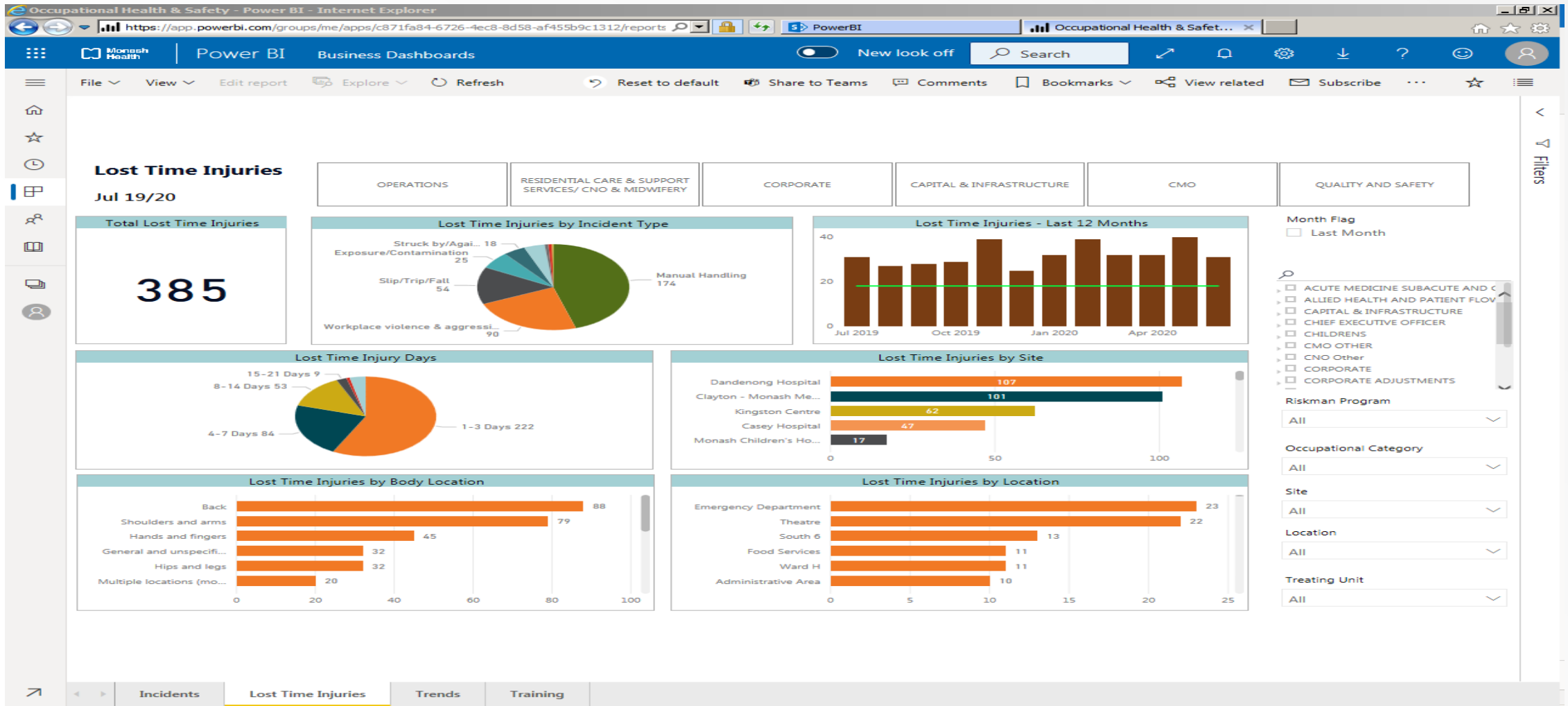
Workplace Inspections



OHS Dashboard



Lost Time Injuries



What do you need to do

- Complete workplace inspections each quarter – Close out actions
- If you have an injured worker stay in contact with them/engage with IM team early
- Investigate incidents posted in riskman including near misses
- Ensure employees attend training (e.g OVA, Manual Handling)
- Use the OHS dashboard to monitor performance, bookmark your area
- Consult with the OHS Team



Challenges

- Health and Health and Safety is everyone's responsibility, we as Managers need to be leaders in the area.
- Develop health and safety capability in both managers and employees.
- Build a culture where employee safety is as important as patient safety.

