



**Monash
Health**

COVID-19 SEPHU and Vaccination Program

Employee Forum

20 July 2021

The 2021-22 QBIP includes transformational priorities from our COVID-19 pandemic response...

New workforce models of care

Telehealth

Strengthened our public health response



Remote working strategy

Strong partnerships with other health Services



Exceptional Care, Everywhere Program

Access to care improvement initiatives

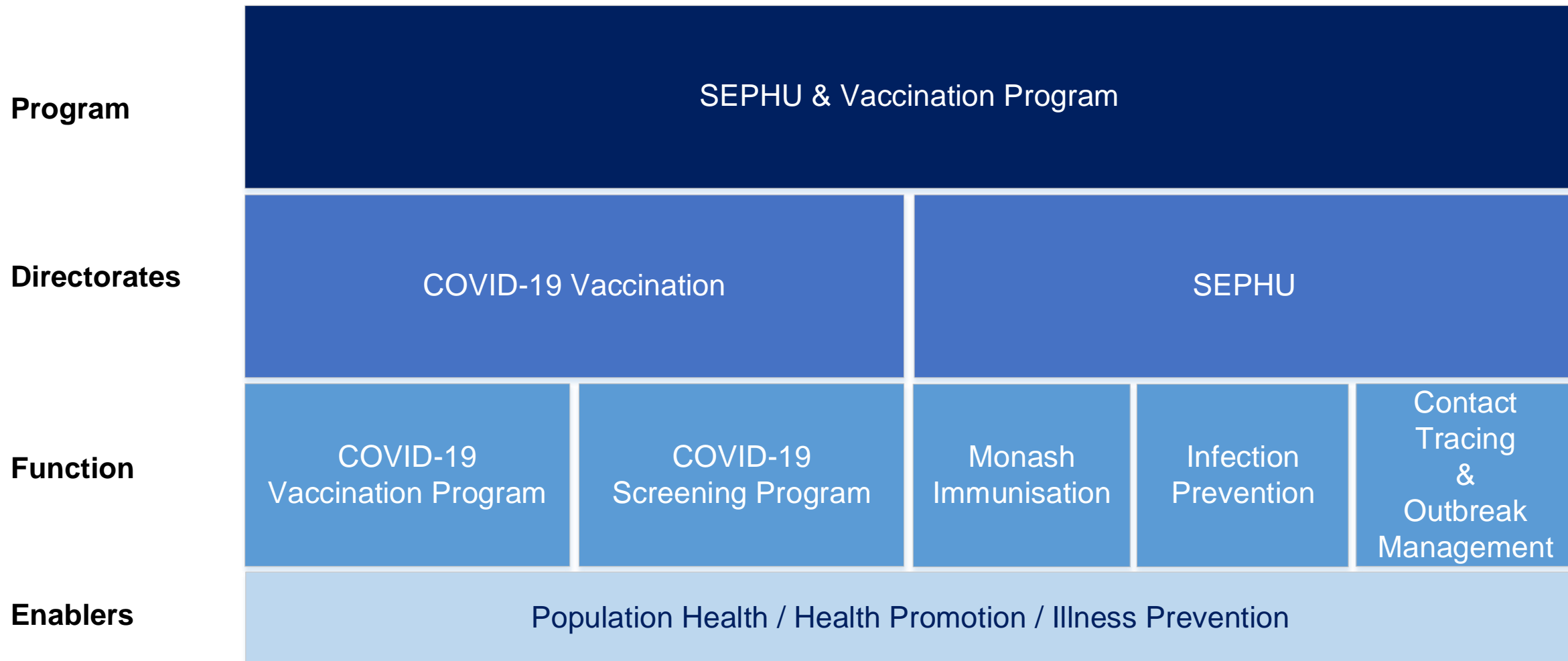


3

The newly created SEPHU & Vaccination Program provides substantive governance arrangements to oversee the next phase of our COVID-19 vaccination program and broader local PHU function....

Program Leadership

- **Rhonda Stuart**, *Program Director SEPHU and Vaccination Program*
- **Tom McLaughlin**, *Director Vaccination Program*



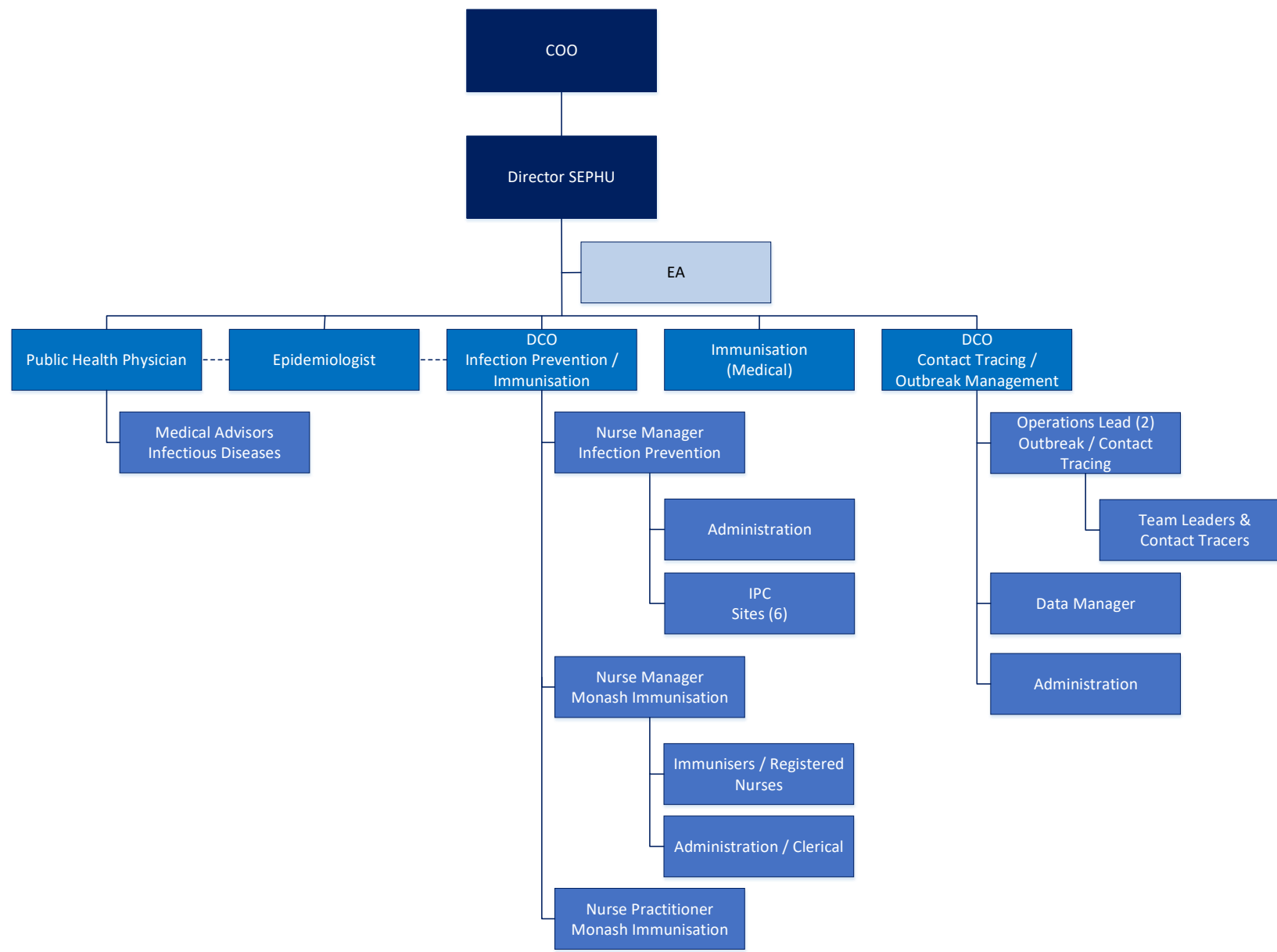
SEPHU and Vaccination Program

- The South East Public Health Unit was established to:
 - strengthen the public health response to COVID-19 and other preventable diseases
 - Support local engagement with the community in the South East catchment area
- The unit provides a vehicle for the integration of care and public health functions including:
 - Broader immunisation
 - Illness prevention
 - Population health
 - Ability to rapidly respond to infection prevention issues, new cases and outbreaks in our local catchment area
- Existing Monash Health services including Monash Immunisation and Infection Prevention have integrated with the South East Public Health Unit to create a new clinical program *SEPHU and Vaccination Program*.

Substantive leadership and governance arrangements are being implemented to oversee the next stage of our COVID-19 public health response and longer-term, immunisation, illness prevention, surveillance and health promotion activities for our community.



The broader functions of SEPHU will build to deliver public health programs in a post-COVID-19 environment...



SEPHU Manages three key elements in it's role as a "Vaccination Hub" for South-East Melbourne



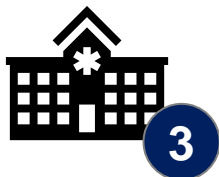
Catchment strategy

Decides when, where, how and who administers the vaccine in the South East metro



Logistics mgmt.

Receives, stores, and ships vaccine to spokes in both thawed and frozen state

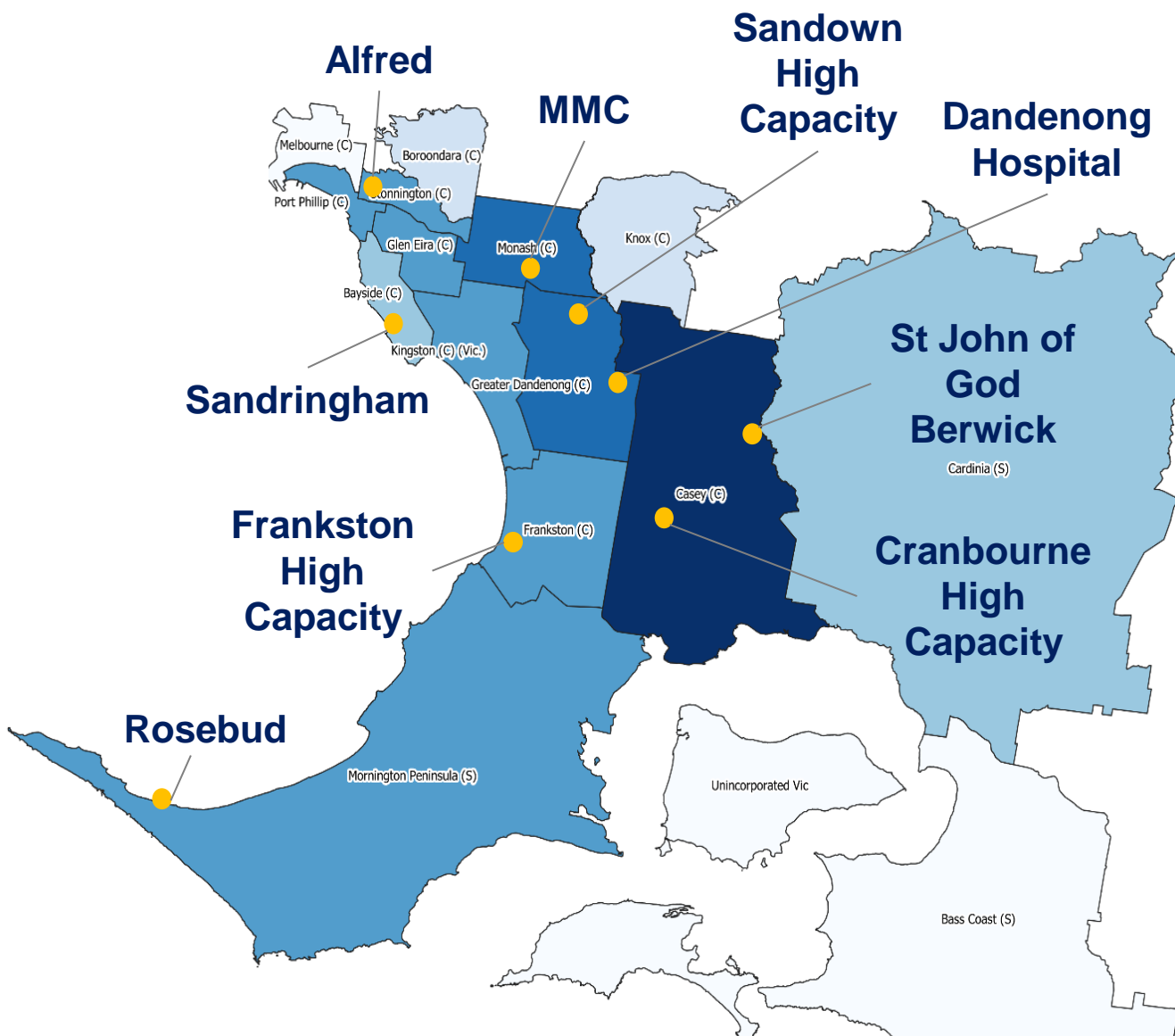


Vaccine Administration

Operates its own 'spoke sites' delivering the vaccine to thousands of Victorians



SEPHU operates nine public vaccination centres - 190 cubicles with a combined ability to deliver over 7,500 vaccinations a day



- Catchment totals 1.8 million people
- SEPHU on track to deliver the majority of vaccinations

Achievements so far



22 February 2021 history in the making

THE AGE

Melbourne
Possible shower

17.1°
14° / 21°

● Live Coronavirus pandemic

First Victorian receives COVID vaccine; state records no new cases

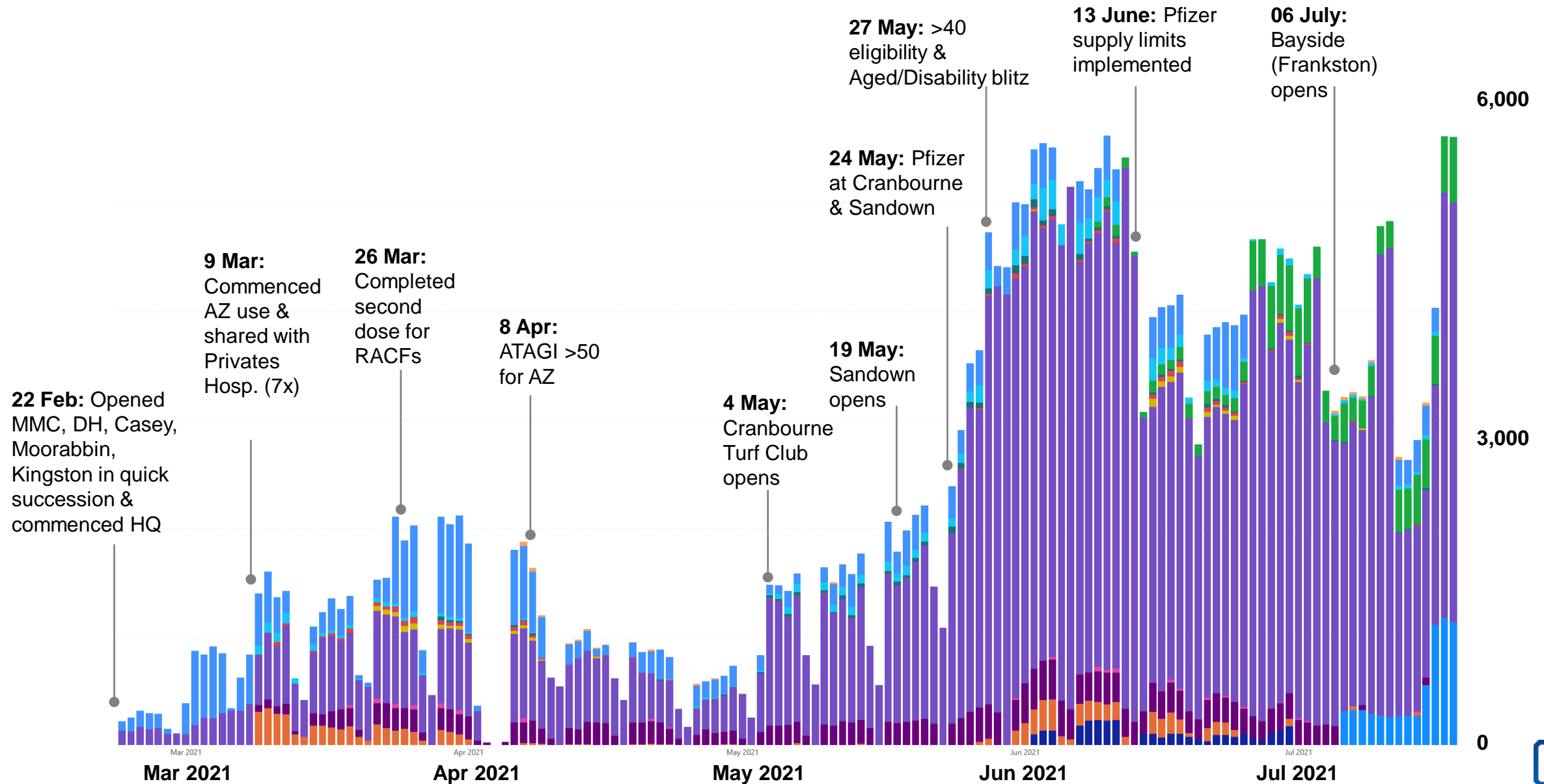


Monash Health Professor Rhonda Stuart, who treated Victoria's first COVID-19 patient, has

We've come a long way
in five months...



SEPHU has successfully overcome many challenges to deliver over 320,000 vaccinations in the South East



SEPHU has been pivotal in supporting our employees and community in the fight against COVID-19

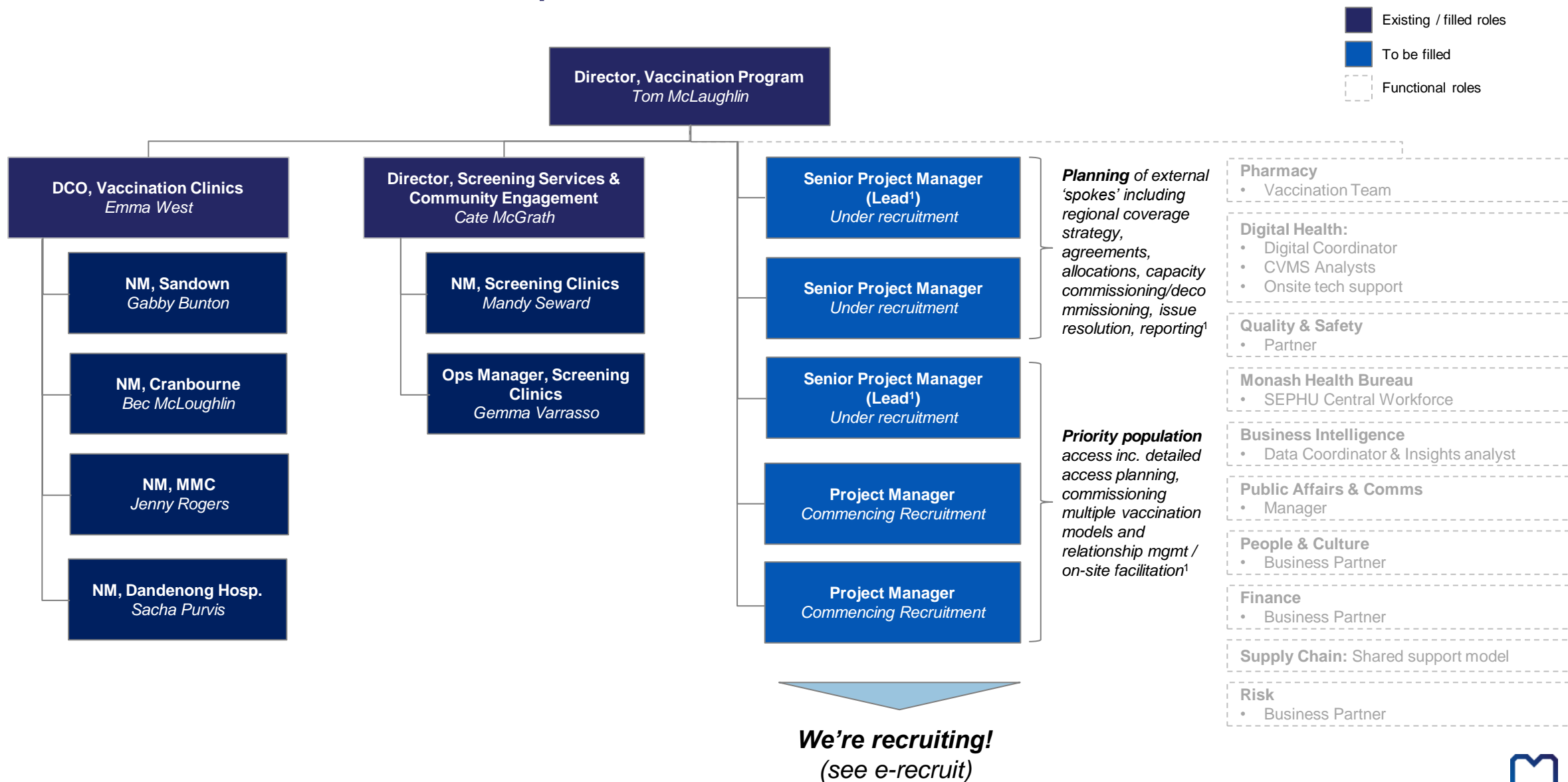
- ~13,000 employees have received their first dose (72%)
- ~42,000 calls taken by Monash Health Employee Vaccination Hotline team
- ~330,000 doses administered to our community (210,000 fully vaccinated)
- Highest number of doses administered in a day across sites – 5,600
- Highest number of doses administered in a single day at a single site – 2,700 (Sandown Racecourse)
- Wastage only 0.42%
- Vic Gov rolled out Monash Health's in-house CVMS training modules for state-wide use
- ~500,000 COVID-19 tests completed by the screening teams and processed by the Pathology (since recording began)



What's next?



The Vaccination Program will grow to support the next phase of vaccination & associated priorities



...however there is more work to be done to achieve our goal of offering a vaccine to every eligible person by 31 Dec

Priority

What we're aiming for

NOT EXHAUSTIVE

1

**Fixed Sites**

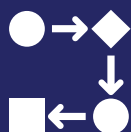
- Analyse geographic catchment data
- Determine if current fixed sites are providing maximum access
- Coordinate changes with our partners

2

**Priority Populations**

- Analyse demographic catchment data
- Determine what 'mobile models' and 'engagement' is required to provide access to those who can't attend independently
- Coordinate with all health providers in SEPHU catchment to leverage existing models and/or stand up new

3

**Established**

Continuous improvement of (not exhaustive)

- risk mgmt,
- quality & safety,
- performance,
- workforce, and
- data integrity



Meet the Vaccination team



Thank you to the 'Vac Attack' team who made this possible...here's a few of them



And here's the broader Vaccination Program team (not exhaustive!)

Frontline Teams

- Leadership
- Nurses, RUSONS
- Admins & Concierge
- Pharmacy
- Volunteers
- Security

Infection Prevention and Control

- Anita Lovegrove
- Sue Ryan
- Rhonda Stuart

and team

Specialist consulting

- Claire Pierce
- Marina Cauchy
- Peta O'Brien
- Sinead McKeown
- Kirsten Holden
- Claire Pierce

and team

Pharmacy

- Tom Chynoweth
- Nicole Dirnbauer
- Chihao La
- Sue Kirsas

and the Pharmacy team

Project team

- Martin Keogh
- Shannon Wiseman
- Rob Dashwood
- Steph Pearce
- Emma West
- Eliisa Fok
- Rhonda Stuart
- Sarah Hirschi
- Sarah Lorentzen
- Fiona Sherwin
- Rebecca Carlton
- Racheal Yates
- Christy Hatherley
- Phillip Chen
- Christina Campbell
- Mel McKee
- Ishmeet
- Neil Sigamoney
- Shelly Smithers
- Radhika Khurana
- Louisa Angeloglou

Expert Advisors

- Karen Bellamy
- Tony Korman
- Joanne Hickman
- Veronica Lehnendorf
- Laura Creaton
- Steve Bills

Digital Health & BI Team

- Robert Dashwood
- Chirag Lodhia
- Jeremy Maidment
- Superusers & Kanwar/Jeevan
- Ben Kuppe & Ben Smith & Team

and the Digital Health team

Public Affairs and Communication

- Jasmine Brammer
- With lots of support from the entire Public Affairs and Communication team

Legal services & Finance

- Peter Ryan
- Claire Hare
- John Bishop
- and the Legal Services team

Community and Aged Care

- Debra Gascard
- Julie White
- Andrew Perta

and their teams

Bureau

- Jo Begbie
- Jacqui Thompson
- Sheedi Ferrari-Brown
- Steph Szabo

Public Affairs and Communication

- David Bloxham
- Tim Bennett
- Jasmine Brammer
- Lizzy Lamb
- Louise Kanis

and the Public Affairs and Communication team

- Our media interview subjects

Legal services

- Peter Ryan
- and the Legal Services team

Community and Aged Care

- Debra Gascard
- Julie White
- Andrew Perta

and their teams

Our SEPHU Partners: Peninsula Health, Alfred, SJO, Private Hospitals, Connect, CBCHS, STAR, EACH, LGAs and list goes on...



Thank you to everyone who has rolled up their sleeves to work on the SEPHU program team and those who rolled up their sleeves to get vaccinated. This short video, is a reminder of why we do it.

<https://vimeo.com/576640629/21ab09e8f0>

