

COVID-19 Maternity Patients Model of Care

Monash Medical Centre Clayton

All Employee Forum

27 July 2021



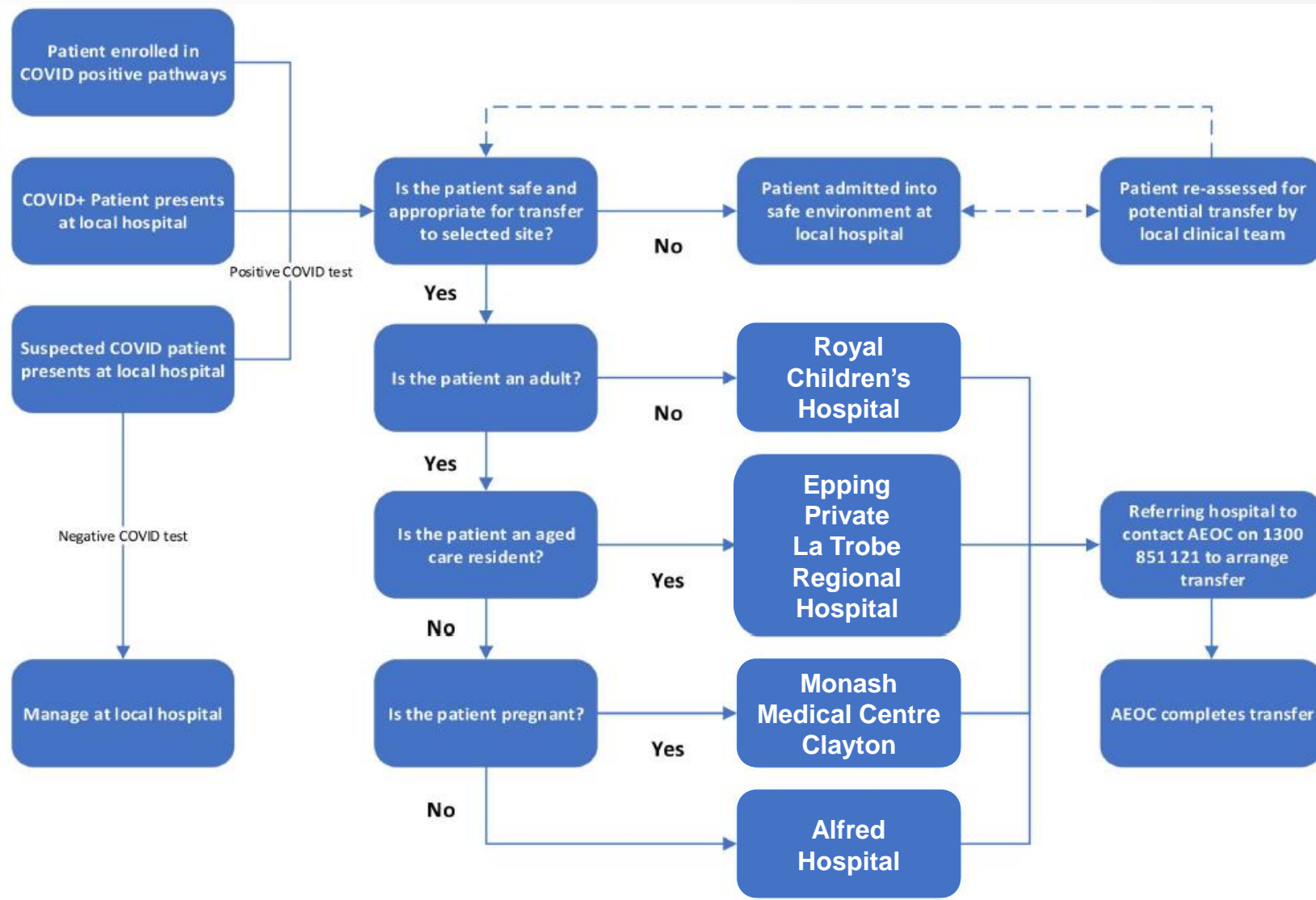
Victoria has established a Designated Hospital Model for providing hospital care to COVID-19 positive patients

- The model builds on the lessons learned from hotel quarantine and is designed to achieve the highest possible level of care while keeping healthcare workers safe.
- The model is based on reducing the number of services caring for COVID-19 positive patients and therefore the number of people involved, building expertise and utilising suitable infrastructure.
- Designated sites are:

Alfred Health	General Admissions and Hotel Quarantine
Melbourne Health	General Admissions and Hotel Quarantine
Royal Children's Hospital	General Admissions and Hotel Quarantine
Epping Hospital	Aged Care Residents
Royal Women's Hospital	Hotel Quarantine Pregnancy and Gynaecology
Monash Medical Centre	Non-Hotel Quarantine pregnant women



SEMHS Pathway for COVID positive patients requiring hospital admission



For Pregnant Women

- **In Hotel Quarantine**

- Pregnancy/Gynaecological → RWH
- COVID-19 concern → General High Acuity Service (RMH)

- **In the community**

- Pregnancy and COVID-19 → MMC

MMC adds capacity to RWH and can manage a higher level of acuity of women's conditions without the need to transfer (i.e. RWH don't have an ICU for adults)



Maternity data from Lockdown 2 (4 month period)

- 100 pregnant women across Victoria tested positive for COVID-19
 - 40 of the 100 women were admitted to hospital
 - 23 of these 40 women were admitted for COVID-19 reasons
 - 1 pregnant patient (twins) was critically unwell
 - Length of stay: 1-7 days (excluding the critically unwell woman)
-
- In 2020 Monash Health supported 12 COVID-19 positive women during their pregnancy including 3 who were positive at the time of birthing.
 - No employees were infected with COVID-19 during any of these encounters.



Admission Model

Admission Ward:

- Negative Pressure Birth Suite for assessment/labour/birth
- Ward 32 utilising negative pressure rooms for admitted antenates / postnates

ICU

- Negative pressure room in MMC with dedicated team

Newborn

- Newborn to stay with mother if well.
- If newborn requires admission to Monash Newborn – admit into negative pressure room with dedicated team.

Theatre

- If required – staff to be carefully managed to reduce exposure risk



Workforce

- Dedicated teams of midwifery, nursing, medical and clinical support staff will work with COVID-19 women.
- All people in the COVID-19 team will be:
 - COVID-ready
 - Fully vaccinated
 - Fit tested
 - PPE trained
 - Provided a dedicated tearoom space
 - Surveillance tested for COVID-19 as per DoH guidance
 - One nasal / throat PCR per week
 - Four weekly saliva swabs
 - Supported through our wellbeing program



Next Steps

- Broad consultation with employees
- For wards and relevant services areas:
 - Refine scenario workflows
 - Confirm local workforce plans and rostering
 - Implement local surveillance testing

