

**NON-COVID – Tier 2 PPE**

- Includes a person who screens negative and/or has no clinical or epidemiological risk factors for COVID-19
- Includes a SCOVID (Low Risk) who tests negative to a SARS-CoV-2 nucleic acid test.
- Includes a person who is a cleared case.

SCOVID (Low Risk) – Tier 3 PPE until cleared

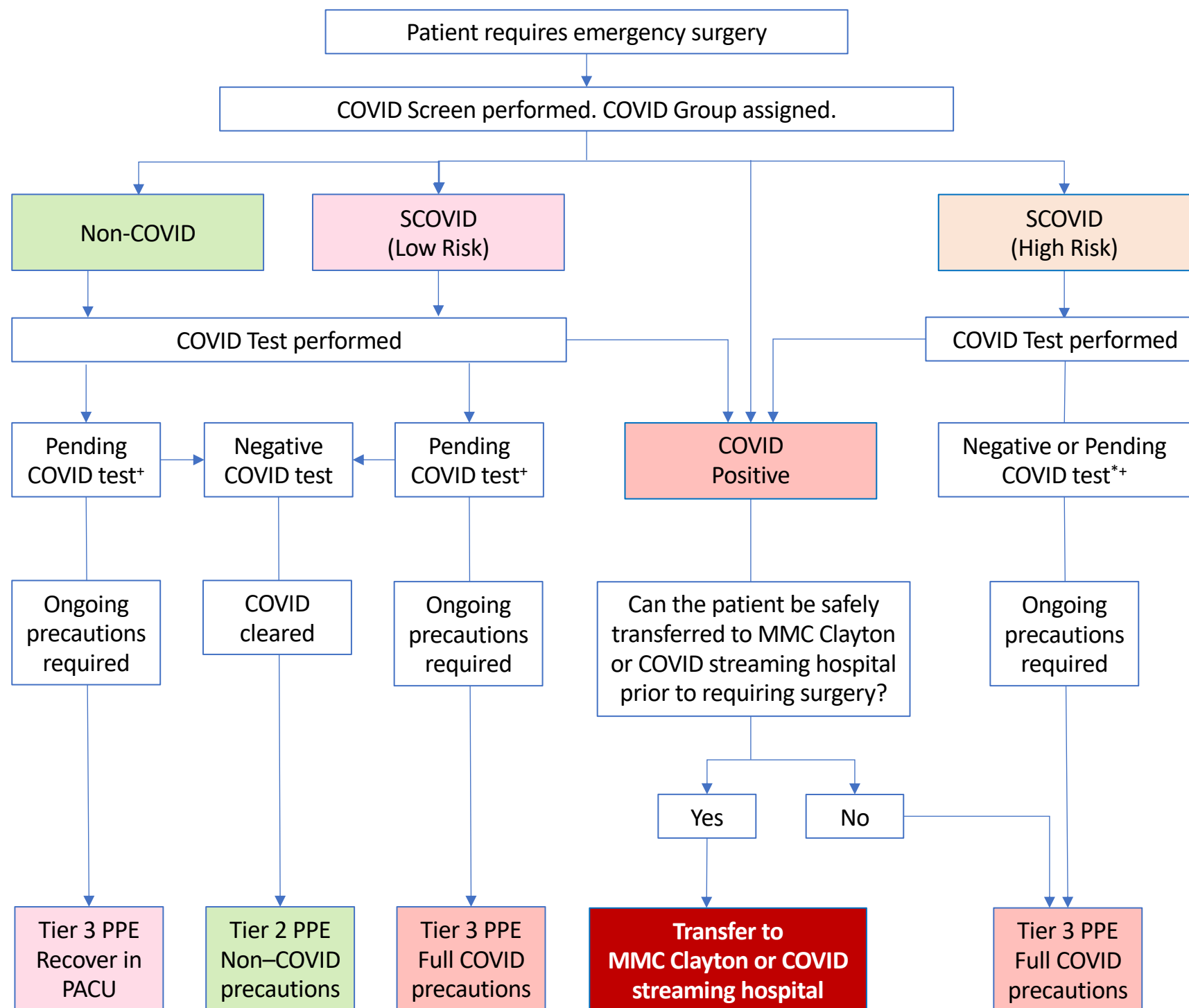
- Includes a person with symptoms (but no epidemiological risk factors) awaiting the results of a test
- Includes a person where no history can be ascertained, until otherwise clarified.

SCOVID (High Risk) – Tier 3 PPE

- Includes a person in quarantine for any reason (including; being a close contact of a confirmed case of coronavirus (COVID-19), or a returned traveller from overseas or a relevant interstate area with outbreaks as defined by public health, in the last 14 days) with or without a compatible clinical illness. This group of people is also referred to as 'at-risk'.
- Includes a person who has a compatible clinical illness **AND** meets one or more of the following epidemiological risk factors, in the 14 days prior to illness onset:
 - Was employed in an area where there is an increased risk of COVID-19 transmission: e.g., Hotel quarantine, port of entry, aged care or healthcare workers, working in a location where there are active outbreaks, or other high-risk industries where there are known cases or high levels of community transmission.
 - Lived in or visited a geographically localised area at high-risk as determined by public health.
 - Has been released from a quarantine facility

COVID-POSITIVE – Tier 3 PPE

Positive COVID Test



* Clearance from SCOVID (High Risk) to non-COVID precautions requires >14 days post-exposure with negative test, or ID review.

* For time critical surgery that cannot await the result of a test