

Victorian Heart Hospital - Update -

Bernadette Comitti, 16 August 2022



Current status

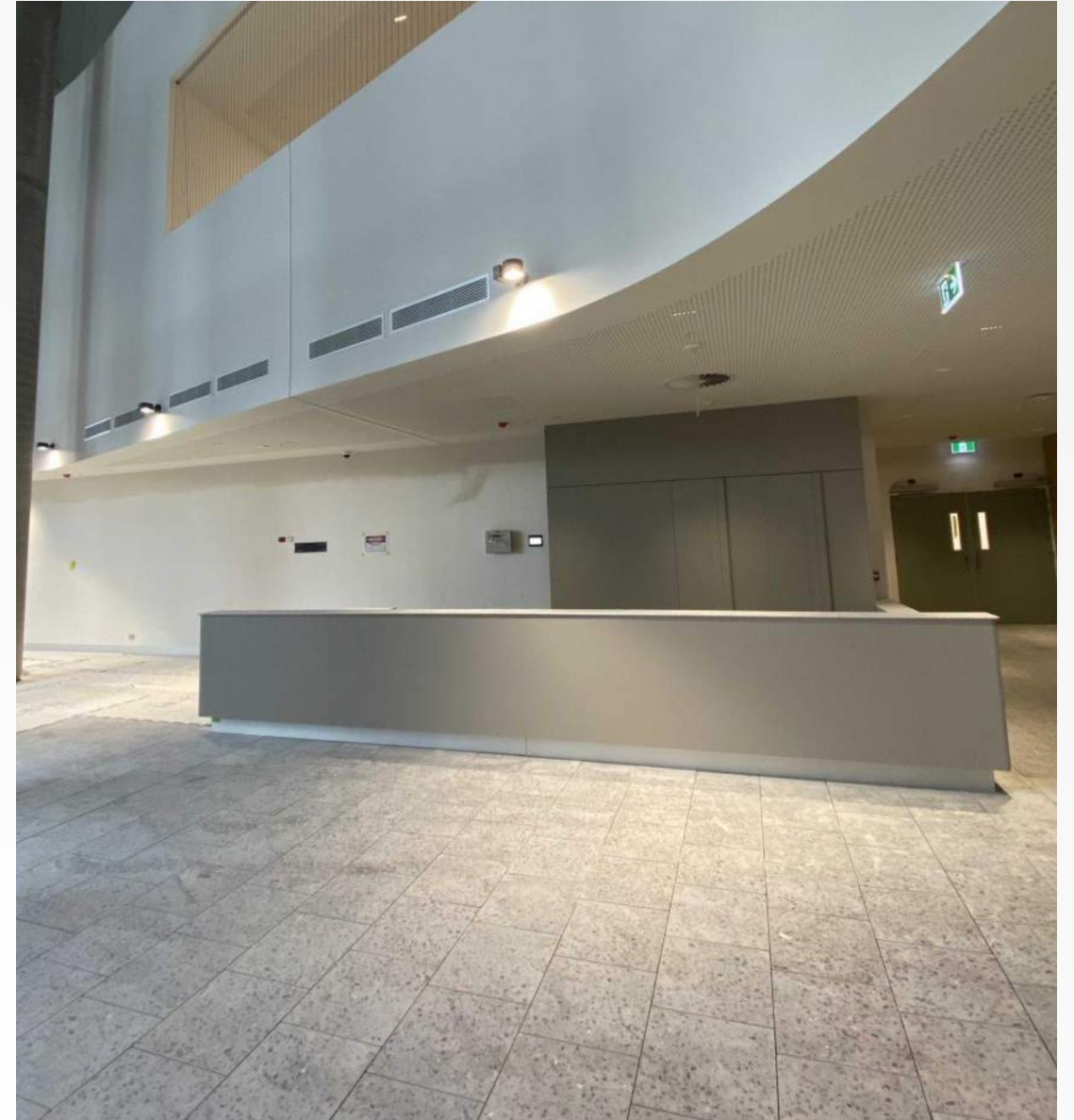
- Build is progressing well – practical completion is on track for 3 November
- Internally, key equipment installation has commenced and remaining fit outs are being completed
- Externally, landscaping and minor completion works underway
- Helipad planning process well advanced; helipad components currently in manufacturing
- Development of Model of Care completed for all clinical and non-clinical areas











Scanning equipment





Theatre, cath labs





Timeline

3 November

Practical completion
Handover of building to
Monash Health

Dec/Jan/Feb

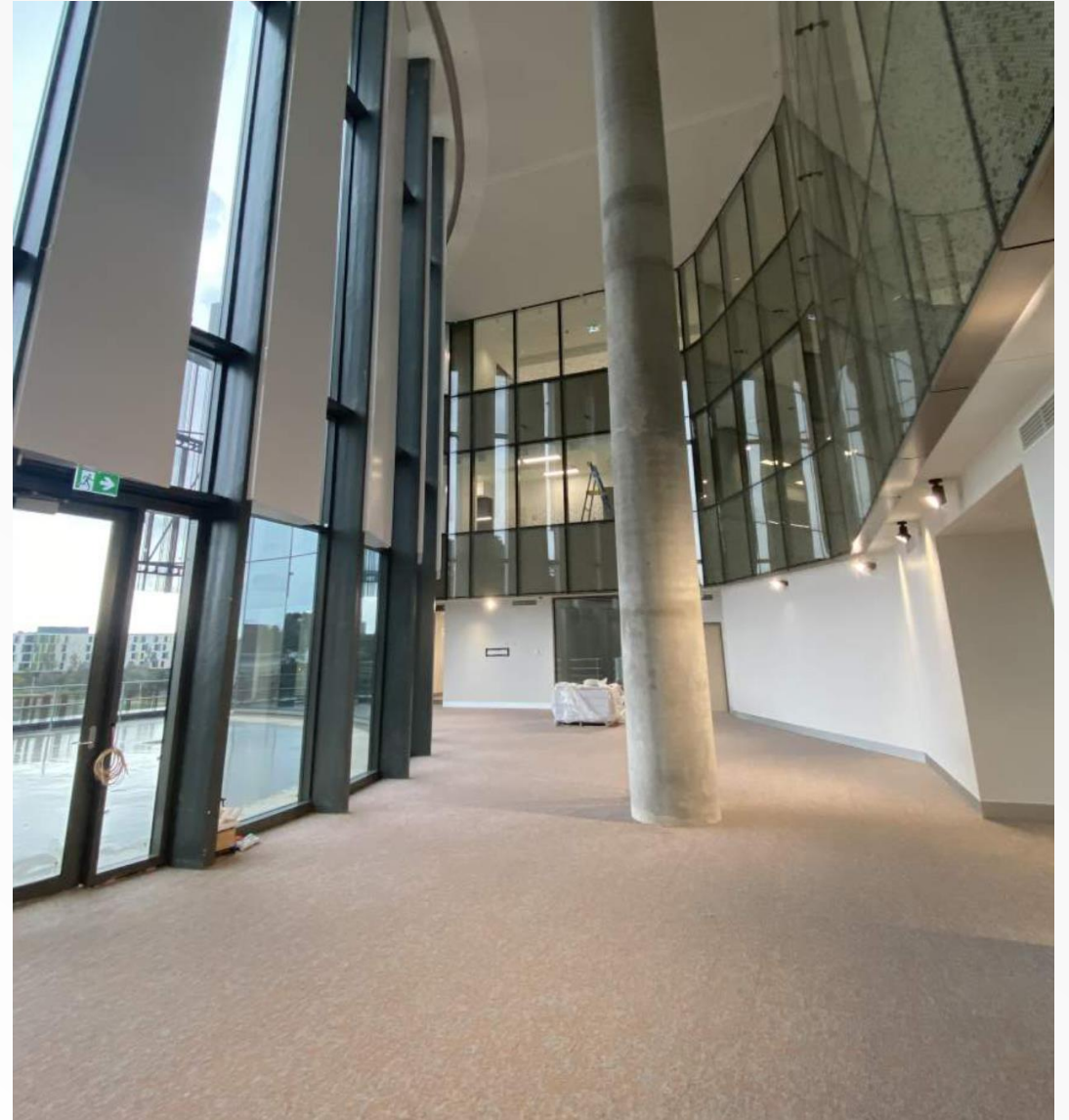
Equipment delivery &
commissioning
Employee orientation
Transition of services from
Clayton to commence
(Jan/Feb)

23 February

First patients arrive 23 Feb from
W32 & CCU
ED, 2 x cath labs, 1 x theatre,
ICU open 24 Feb
Full services inc consulting
commence 27 Feb

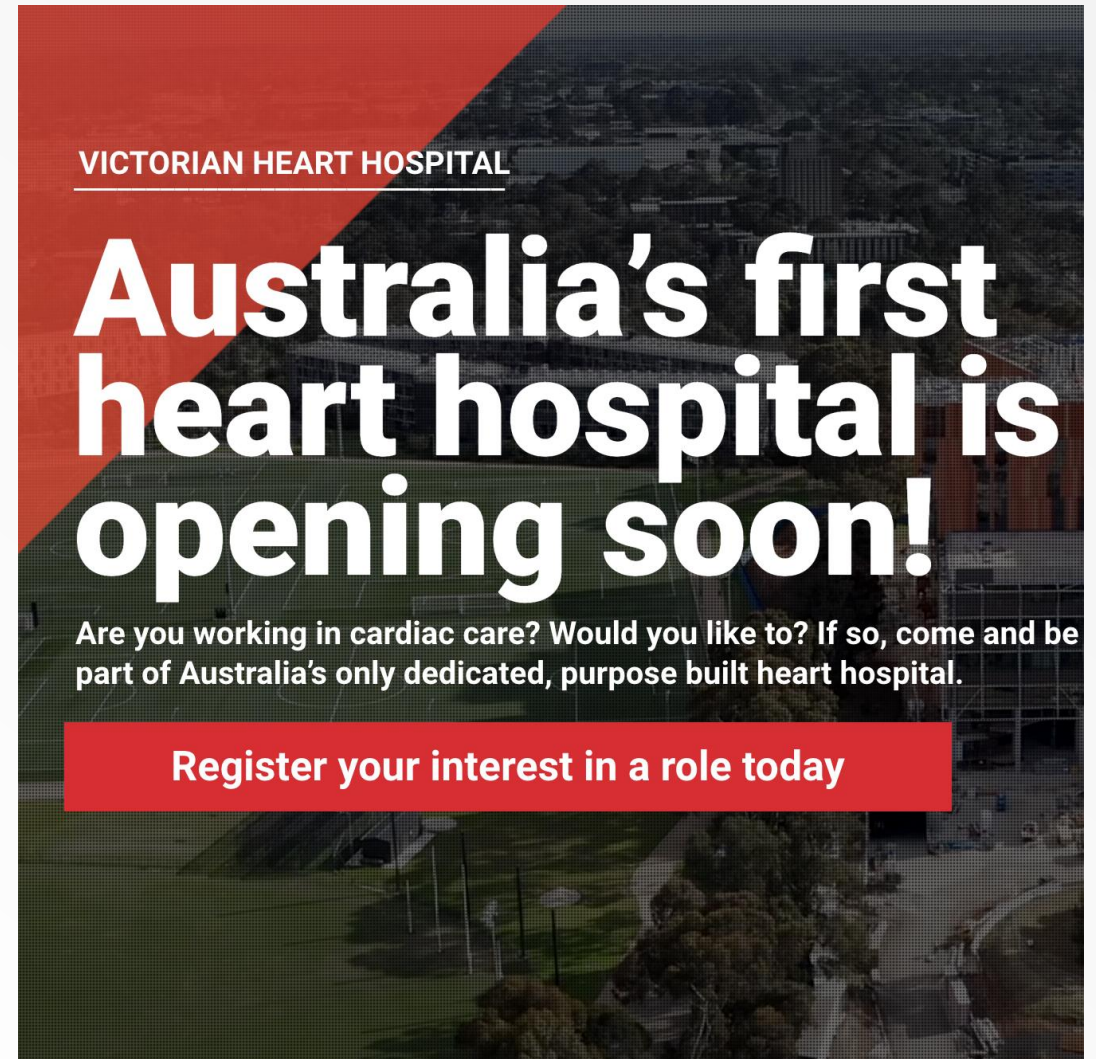
Transition planning

- Change process is currently in consultation with Monash Heart and all other impacted areas
- All employees retained + major recruitment campaign underway. 388 Monash Health EFT expected to transfer to the Victorian Heart Hospital
- Transition leads have now been appointed – working with operational leads



Recruitment

- Major recruitment campaign has commenced – strong initial interest
- Over 700 new EFT sought across all specialties
- State of the art design, plenty of car parking, new bus stop, great end of trip facilities, unique employee areas, set on the University grounds
- Spread the word!



Thank you

